



*Essential Validation Services*



**Nature's** FUSIONS  
ESSENTIAL OILS



**Sample:**

---

Client: | Nature's Fusions  
Sample: | Icicle (Skin Cooling)  
Batch # | NF-NF.ICIC-18-A  
CAS Number |  
Type: | Blend

---

**Conclusion:**

- No adulterants, diluents, or contaminants were detected via this method.
- This oil meets the expected profile for genuine oil of Icicle (Skin Cooling).

X 

---

Validated By:



Essential Validation Services

747 SW 2nd Ave, Gainesville, FL 32601

Phone: 317-361-5044 E-mail: Adam@essentialvalidationservices.com

**Summary of Analyses**

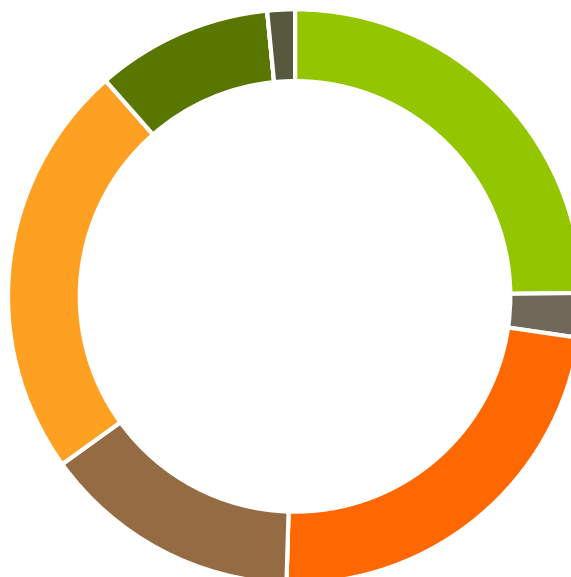
---

A fresh sample of Icicle (Skin Cooling) (10 uL in .5to.5 mL Hexane + ETOH) was prepared and analyzed via split injection GC/EI-MS.



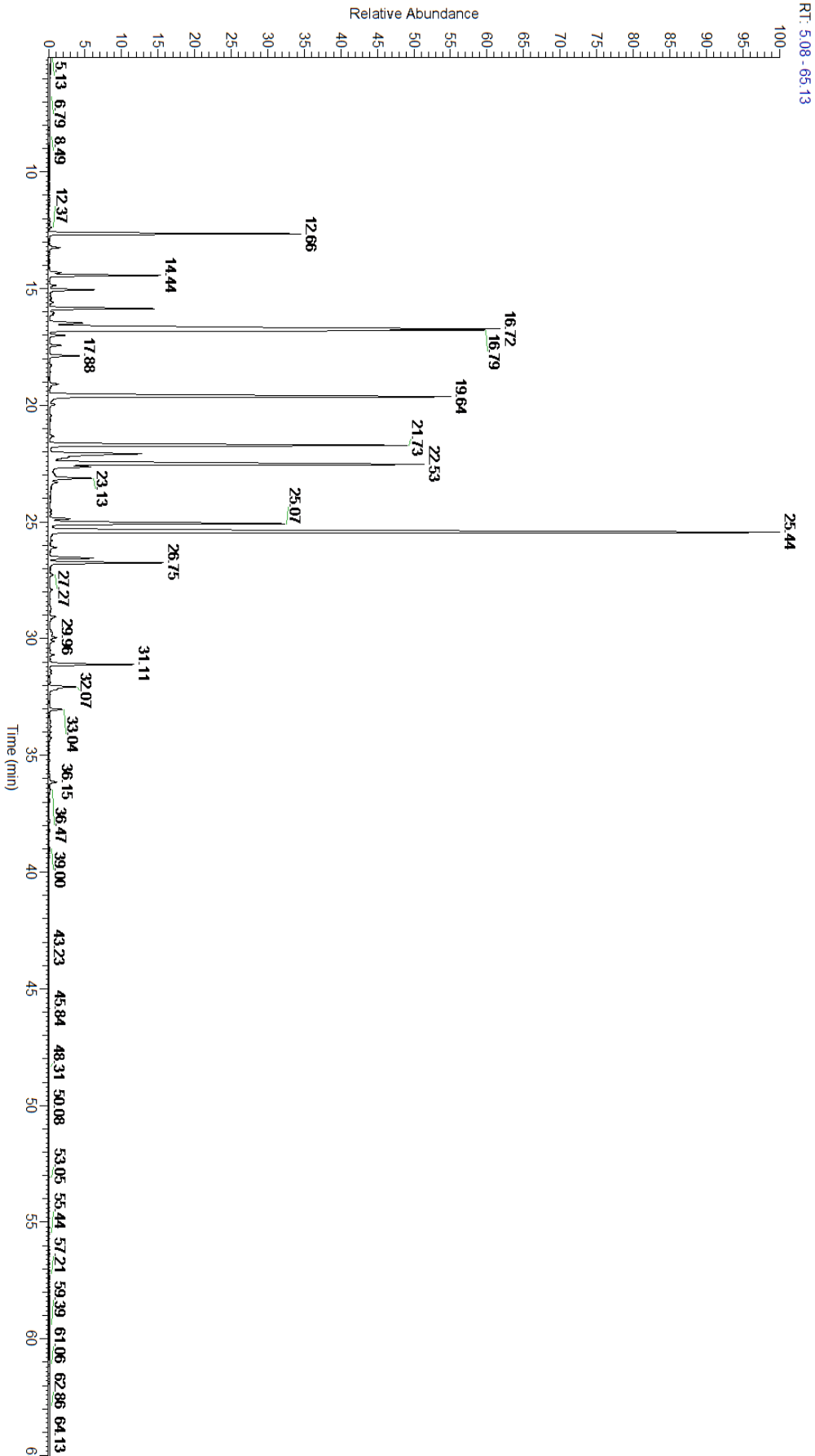
Main Compounds	Percentages
Linalyl acetate	20.03%
Limonene	12.64%
Linalool	11.01%
Menthol	10.49%
Menthone	8.53%
1,8-Cineole	6.82%
Carvone	5.53%
alpha-Pinene	4.80%
Menthofuran (Co-Eluting)	3.10%
Menthyl acetate	2.24%
beta-Pinene	2.10%
delta-3-Carene	1.95%
beta-Caryophyllene	1.68%

Monoterpenes	Sesquiterpenes	Monoterpenols	Sesquiterpenols	Ketones
24.81%	2.50%	23.17%	0.00%	14.58%
Esters	Ethers	Aldehydes	Phenols	Other
23.47%	9.92%	0.00%	0.00%	1.55%



- Monoterpenes
- Sesquiterpenes
- Monoterpenols
- Sesquiterpenols
- Ketones
- Esters
- Ethers
- Phenols
- Other

ESSENTIAL VALIDATION SERVICES | 747 SW 2<sup>ND</sup> AVE GAINESVILLE, FLORIDA 32601 | 317-361-5044



ESSENTIAL VALIDATION SERVICES | 747 SW 2<sup>ND</sup> AVE GAINESVILLE, FLORIDA 32601 | 317-361-5044



ESSENTIAL VALIDATION SERVICES | 747 SW 2<sup>ND</sup> AVE GAINESVILLE, FLORIDA 32601 | 317-361-5044

Total Percentage		98.45%			
Peak Number	RT	Area %	Compound Name	RI	Chemical Family
1	12.37	0.02%	alpha-Thujene	927.80	Monoterpene
2	12.66	4.80%	alpha-Pinene	936.10	Monoterpene
3	13.25	0.21%	Camphene	950.30	Monoterpene
4	14.32	0.20%	Sabinene	973.00	Monoterpene
5	14.44	2.10%	beta-Pinene	974.00	Monoterpene
6	14.86	0.11%	Octan-3-one	981.00	Aliphatic Ketone
7	15.06	0.81%	Myrcene	989.20	Monoterpene
8	15.59	0.06%	alpha-Phellandrene	1002.00	Monoterpene
9	15.86	1.95%	delta-3-Carene	1008.00	Monoterpene
10	16.04	0.09%	Hexyl acetate	1009.00	Aliphatic Ester
11	16.48	0.81%	para-Cymene	1024.30	Monoterpene
12	16.72	12.64%	Limonene	1029.50	Monoterpene
13	16.79	6.82%	1,8-Cineole	1031.80	Monoterpene Ether
14	17.01	0.26%	(Z)-beta-Ocimene	1037.80	Monoterpene
15	17.44	0.21%	(E)-beta-Ocimene	1047.70	Monoterpene
16	17.88	0.56%	gamma-Terpinene	1054.00	Monoterpene
17	19.10	0.18%	Terpinolene	1092.10	Monoterpene
18	19.64	11.01%	Linalool	1099.00	Monoterpenol
19	19.97	0.07%	Octen-3-yl acetate	1107.00	Monoterpene Ester
20	21.73	8.53%	Menthone	1155.00	Monoterpene Ketone
21	22.08	3.10%	Menthofuran	1164.00	Monoterpene Ether
22	22.09	Co-Eluting	Isomenthone	1164.33	Monoterpene Ketone
23	22.09	Co-Eluting	Neomenthol	1165.00	Monoterpenol
24	22.53	10.49%	Menthol	1177.40	Monoterpenol
25	22.64	0.79%	Terpinen-4-ol	1180.57	Monoterpenol
26	23.13	0.88%	alpha-Terpineol	1191.71	Monoterpenol
27	24.86	0.39%	Pulegone	1244.43	Monoterpene Ketone
28	25.07	5.53%	Carvone	1248.14	Monoterpene Ketone
29	25.44	20.03%	Linalyl acetate	1263.80	Monoterpene Ester
30	25.80	0.02%	Isopiperitenone	1275.20	Monoterpene Ketone
31	26.10	0.11%	Neomenthyl acetate	1275.00	Monoterpene Ester
32	26.55	0.87%	Lavandulyl acetate	1285.00	Monoterpene Ester
33	26.75	2.24%	Menthyl acetate	1297.00	Monoterpene Ester
34	27.27	0.06%	Isomenthyl acetate	1308.00	Monoterpene Ester
35	31.11	1.68%	beta-Caryophyllene	1427.14	Sesquiterpene
36	32.07	0.59%	(Z)-beta-Farnesene	1453.40	Sesquiterpene
37	33.04	0.23%	cis-Muurola-4(14),5-diene	1465.75	Sesquiterpene